



WELCOME TO NEW YORK LANGUAGE CENTER!

We hope that you enjoy your time studying with us. Below you will find some useful information and resources that will prepare you for your trip to New York City. We look forward to meeting you at our school.

Health Insurance

While NYLC does not require our students to purchase medical insurance, we strongly recommend it. The risks and consequences of not having medical coverage are serious: medical costs in the United States could be in the tens of thousands of dollars and you risk getting substandard care without insurance.

Once you have your visa we recommend that you enroll for insurance starting on your date of arrival to the U.S.

Here are a list of recommended health insurance providers:

For F-1 Students:		www.isoa.org
		www.InternationalStudentInsurance.com
For Students on an Tourist Visa:		www2.sevencorners.com

Housing Assistance

NYLC can offer housing placement for students in need of accommodation.

For this service, NYLC charges a **\$150 Housing Placement Fee**.

We offer 3-different types of housing options:

- 1) **Student Residence**
- 2) **Homestay**
- 3) **Shared Student Apartment**



For prices & more information on housing, please contact housing@nylanguagecenter.com.

What to Keep With You On the Airplane:

✓ Passport



✓ I-20



✓ Financial Documents



↔ For F-1 Students Only

Transportation From the Airport

Airport transfer can be arranged by NYLC at a charge of **\$150 one-way**.
If you would like to request an airport transfer, please contact an NYLC Student Life Coordinator.

IMPORTANT: *Please do not accept rides from strangers that approach you at the airport, it is recommended that you take yellow taxi.*

Yellow Taxi from JFK Airport: **\$52.00** Flat rate to any Manhattan destination + tolls. It is also customary to tip the driver 15% for good service.

Yellow Taxi from LaGuardia or Newark Airport: No flat rate, metered fare

Other forms of transportation:

JFK Airport: AirTrain and transfer for the E, J, or Z train at Sutphin Boulevard

LaGuardia Airport: M60 Bus via Astoria Blvd, Q70 or Q47 to Midtown, Manhattan

Newark Airport: NJ Transit to Penn Station

Public Transportation in NYC

Metrocards

30-Day Unlimited: \$116.50 **Single Rides: \$2.75**

(Prices listed are valid as of July 2015. Please check www.mta.info for the latest rates).



Subway Directions to School- Each of our school locations are accessible by MTA Public Transportation. See below nearby transportation to each branch location:

NYLC-Midtown:

Subway # 1, 2, 3, A, C, E, N, R, Q, W to Times Square/42nd or 34th Street/8th Ave, or Herald Square/34th St.

From New Jersey take commuter bus to Port Authority or train to Penn Station.

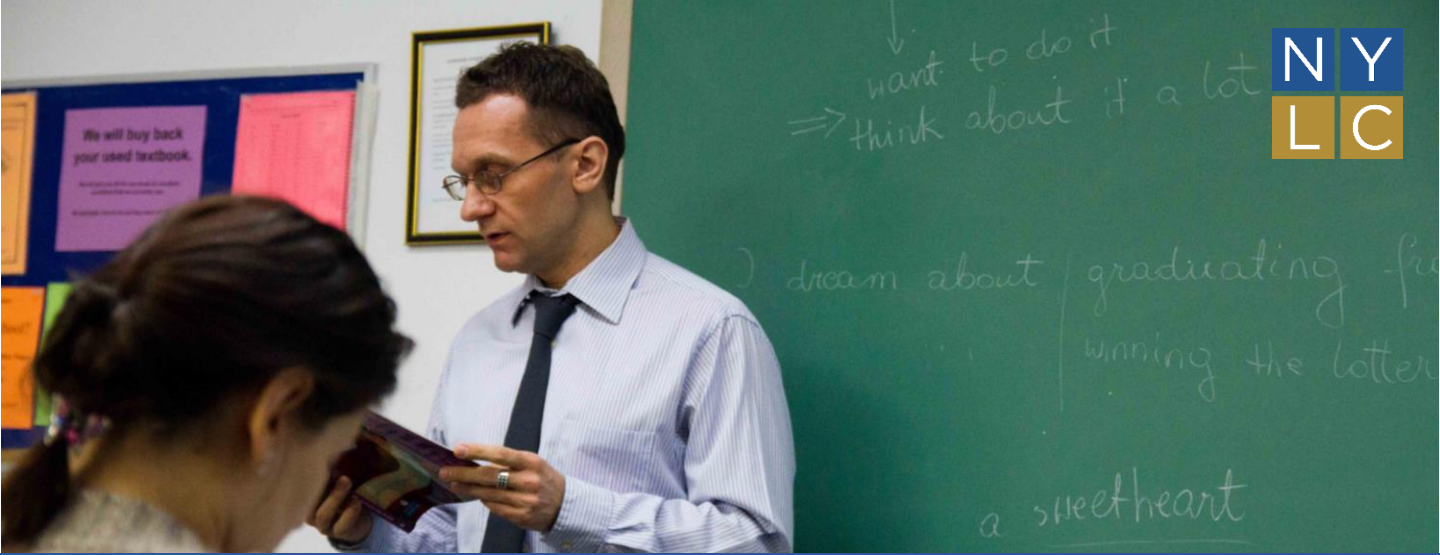
NYLC-Upper West Side Manhattan:

Subway # 1 to 103rd Street.

NYLC-Jackson Heights, Queens:

Subway # 7 to 82nd Street/Jackson Hts. or E, F, G, R to 74th St./Roosevelt Avenue.





First Day of Class

PLEASE ARRIVE TO THE SCHOOL AT 8AM

✓ I-20 Form



✓ Passport

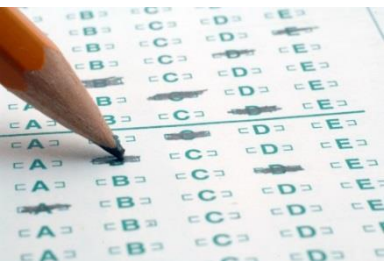


✓ Pencil and Notebook



WHAT TO BRING

↔ For F-1 Students Only



PLACEMENT EXAM

The placement exam has both written and oral components. The exam will take approximately 30-40 minutes to complete. If you arrive to New York before your Program Start Day, you may come to school on any day Monday-Friday (10:00-2:00 PM) & Saturday (10:30- 1:00 PM)

STUDENT ORIENTATION

New Student Orientation is held every Monday after class. All F-1 students are required to attend student orientation. If for any reason you miss it, you are welcome to attend the next orientation the following week.

LOCAL INFORMATION

See NYLC's Guide to New York! This is also available in our Student Guide and as a PDF on our website: <http://www.nylanguagecenter.com/en/foreign-students/student-downloads>



Be sure to check the local weather before you arrive.